

Officers

There is a chapter devoted to the presidents of the second fifty years. The other officers who are Council members are the vice-presidents, members of the secretariat, the treasurer and associate treasurer, and the librarian while the position existed. These are discussed here.

VICE-PRESIDENT

Vice-presidents have been chosen in a contested election since 1941. The office of vice-president is not well defined by function. The bylaws provide a rule of succession in that should the president die or resign when there is a president-elect then that person shall succeed at once. Only in the years that there is no president-elect does the Council, with the approval of the Trustees, make a selection among the vice-presidents. Once in the last fifty years a situation arose where the spirit of these rules had to be considered. During the illness of Julia Robinson toward the end of her term, President-Elect Irving Kaplansky was designated acting president. Vice-presidents used to be called upon frequently to fill in for absent presidents. This phenomenon corresponds to complications of WWII and to difficulties in transportation before plane travel was well established. Since 1962 such instances have been rare. For several months in 1943 during the absence of President M.H. Stone from the country, Vice-president C. C. MacDuffee was named acting president by the Council. There have been occasions when the Council chose a presiding officer other than a vice-president. In September 1952, neither the president nor any vice-president was present and Ex-president T. H. Hildebrandt was chosen to preside. Ex-president Richard Brauer presided in August 1956 even though a vice-president was present and he presided again in December 1956. In August 1960 neither the president nor any vice-president was present and the Council elected E. G. Begle to preside. At the Summer meeting of 1969 in Eugene in the absence of President Zariski the Council elected Ex-president C. B. Morrey to the chair, though a vice-president was present, and he presided at the Business Meeting as well. At the Summer Meeting of 1970 in Laramie neither the president nor any vice-president was present.

The secretary convened the Council, which in turn elected J. T. Schwartz to preside. He then presided also at the Business Meeting.

Vice-presidents are occasionally assigned duties by the president, typically to preside over panel discussions on matters of Society policy. There is no such office in the bylaws as vice-president for an area of Society activity.

A vice-president is not eligible for immediate re-election to that office. In fact, no person has held the office twice. There has been some sentiment against it. In August 1954 (and there may be similar instances) the Nominating Committee proposed the name of E. J. McShane for vice-president. It was pointed out that he had already served as vice-president and the chairman of the nominating committee, C. B. Morrey, Jr., withdrew the name in favor of H. F. Bohnenblust. In fact Bohnenblust was not elected until a later time. Few persons were elected president without having served as vice-president. Since the first fourteen years of the Society the only ones are M. H. Stone, R. Brauer, and C. B. Morrey.

Here are the Vice-Presidents since 1938:

R. E. Langer	1/38-12/39	Emil Artin	1/55-12/56
J. F. Ritt	1/38-12/39	A. A. Albert	1/56-12/57
C. R. Adams	1/39-12/40	Nathan Jacobson	1/56-12/57
T. C. Fry	1/40-12/41	Salomon Bochner	1/57-12/58
F. D. Murnaghan	1/40-12/41	Garrett Birkhoff	1/58-12/59
T. Y. Thomas	1/41-12/42	Norman E. Steenrod	1/58-12/59
C. C. MacDuffee	1/42-12/43	Ralph P. Boas	1/59-12/60
J. D. Tamarkin	1/42-12/43	H. F. Bohnenblust	1/60-12/61
L. M. Graves	1/43-12/44	Oscar Zariski	1/60-12/61
Einar Hille	1/44-12/45	M. R. Hestenes	1/61-12/62
G. T. Whyburn	1/44-12/45	William Feller	1/62-12/63
J. M. Thomas	1/45-12/46	Andrew M. Gleason	1/62-12/63
L. R. Ford	1/46-12/47	S. S. Chern	1/63-12/64
Saunders Mac Lane	1/46-12/47	Lipman Bers	1/63-12/64
P. A. Smith	1/47-12/48	George W. Mackey	1/64-12/65
John von Neumann	1/48-12/49	Mark Kac	1/65-12/66
Hassler Whitney	1/48-12/49	Samuel Eilenberg	1/66-12/67
W. T. Martin	1/40-12/50	Norman Levinson	1/66-12/67
E. J. McShane	1/50-12/51	R H Bing	1/67-12/68
R. L. Wilder	1/50-12/51	David Blackwell	1/68-12/69
G. A. Hedlund	1/51-12/52	Kurt O. Friedrichs	1/68-12/69
Richard Brauer	1/52-12/53	H. S. MacDonald Coxeter	
Deane Montgomery	1/52-12/53		1/69-12/70
D. H. Lehmer	1/53-12/54	Peter D. Lax	1/70-12/71
L. V. Ahlfors	1/54-12/55	Isadore M. Singer	1/70-12/71
Antoni Zygmund	1/54-12/55	Edwin H. Spanier	1/71-12/72

Richard D. Anderson	1/72-12/73	Mary Ellen Rudin	1/80-12/81
R. Creighton Buck	1/72-12/73	Paul R. Halmos	1/81-12/82
Edwin E. Moise	1/73-12/74	Michael Artin	1/82-12/83
Raoul H. Bott	1/74-12/75	Elias M. Stein	1/82-12/83
Irving Kaplansky	1/74-12/75	Calvin C. Moore	1/83-12/84
John W. Milnor	1/75-12/76	Jacob T. Schwartz	1/84-12/85
Mary W. Gray	1/76-12/77	Stephen Smale	1/84-12/85
Louis Nirenberg	1/76-12/77	Linda Preiss Rothschild	1/85-12/86
William Browder	1/77-12/78	Richard A. Askey	1/86-12/87
Julia B. Robinson	1/78-12/79	Olga Taussky-Todd	1/86-12/87
George W. Whitehead	1/78-12/79	Karen Uhlenbeck	1/87-
George Daniel Mostow	1/79-12/80	Barry Simon	1/88-
Hyman Bass	1/80-12/81	William P. Thurston	1/88-

SECRETARIES

The bylaws specify that there shall be a secretary, who is a member of the Council, but prescribe almost no duties. The secretary or an associate secretary notifies Council members of the time and place of the Annual Meeting. The secretary is one of those who can call a meeting of the Trustees. The secretary is a member of the Executive Committee and of the Liaison Committee, whose function is the "immediate direction" of the executive director. The secretary by inference conducts elections in that the secretary is responsible for the sending of ballots. The secretary is responsible for the election of members to the extent of supplying an application blank.

The Council has made up for this deficiency in definition by both general statements and specific assignments. A Committee on the Reorganization of the Secretariat, consisting of L. M. Graves, chairman, W. B. Fite, J. R. Kline, C. C. MacDuffie, E. J. McShane, W. T. Martin, and C. B. Morrey made its final report to the Council of 30 December 1941. In the course of declining to recommend a delimitation or restructuring of the office of secretary, it made the following observations:

It is desirable for the secretary to maintain some general oversight over all the activities of the Society. His is the responsibility of interpreting the policies of the Council and putting these into action, and for interpreting to the Council the reasons for the actions of the Council itself in the past so as to keep a certain degree of continuity of policy, or at least to guarantee that discontinuities occur only after careful consideration.

It is desirable that some general supervision of the financial affairs of the Society remain in the hands of the secretary.

As the Society has grown in size and its activities have increased in complexity, the work of the Society has become more specialized and compartmentalized but these principles seem still to stand.

The secretary from 1921 to 1940 was R. G. D. Richardson, who was dean of the graduate school at Brown University since 1926. See [A] for a picture and an account of his life. Dean Richardson retired in 1942 and died in 1949.

There have been instances of temporary secretaries, including Arnold Dresden for J. R. Kline during part of 1943 while Kline was ill and Lowell Paige for J. W. Green during part of 1961 while Green was on leave. Orville Harold replaced Everett Pitcher during part of a meeting in January 1976 when the Council discussed a matter concerning Lehigh University.

JOHN ROBERT KLINE

John Robert Kline was secretary from 1941 to 1950. He took his Ph.D. in 1916 at the University of Pennsylvania under R. L. Moore and was on the faculty there from 1920. He served at various times as an associate editor of the *Transactions*, the *Bulletin*, and the *American Journal* and on the Editorial Board of the *Colloquium Publications*. He was associate secretary in 1933–1936 and secretary of the International Congress of 1950. His death came in 1955.



J. P. Kluei

EDWARD GRIFFITH BEGLE

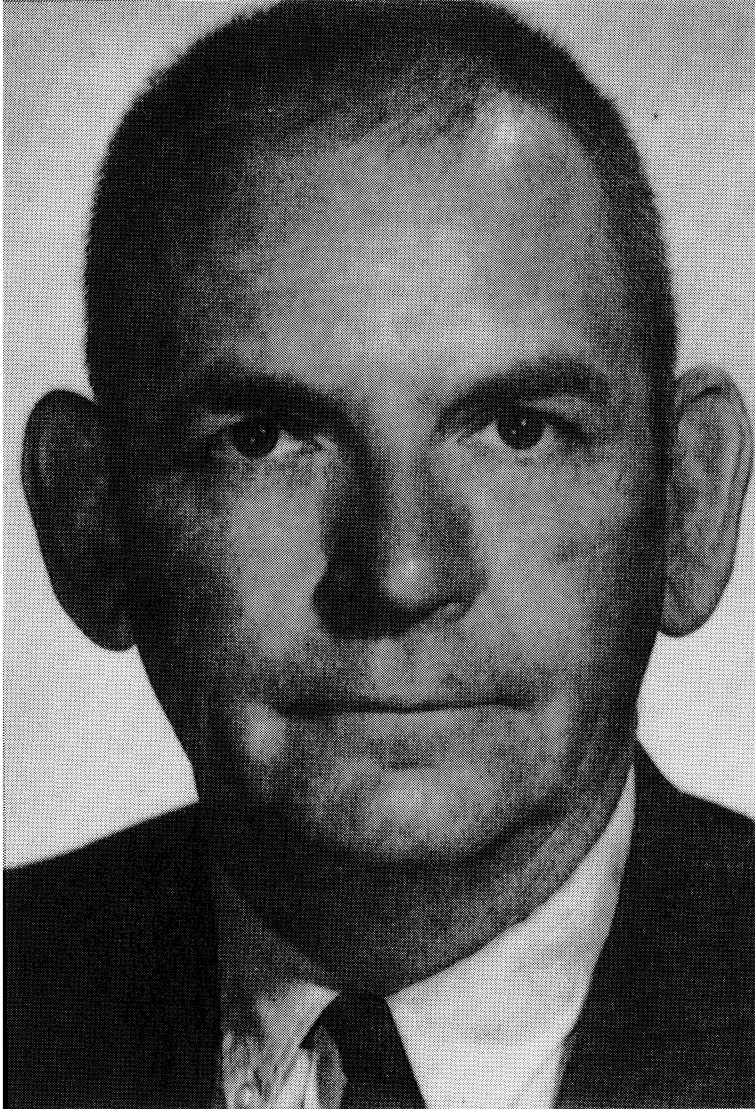
Edward Griffith Begle was secretary in 1951–1956. He was born in 1914 and took his Ph.D. under Solomon Lefschetz at Princeton in 1940. He was on the mathematics faculty at Yale from 1942 to 1961 and at Stanford as professor and director of the School Mathematics Study Group until his death in 1978.



E. G. Bege

JOHN WILLIE GREEN

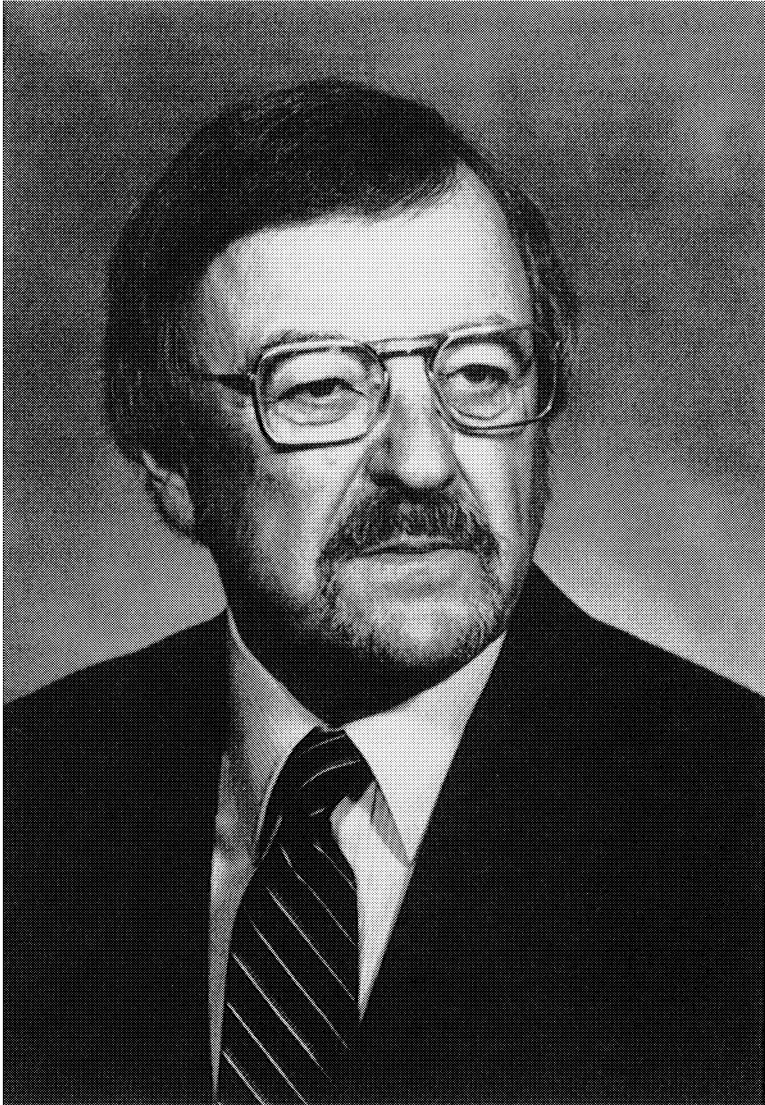
John Willie Green was secretary in 1957–1966. He was born in 1914 and took his Ph.D. at the University of California, Berkeley in 1938 under G. C. Evans. He was on the faculty of the University of California, Los Angeles from 1945 until his retirement in 1984. He was associate secretary in 1947–1955 and was the principal investigator for the Albert survey in 1956–1957.



Johnson

ARTHUR EVERETT PITCHER

Arthur Everett Pitcher was secretary from 1967 to 1988. He was born in 1912 and took his Ph.D. in 1935 at Harvard under Marston Morse. He was on the faculty of Lehigh University from 1938 until his retirement in 1978. He served as associate secretary from 1959 to 1966.



Everett Pitcher

ASSOCIATE SECRETARIES

The associate secretaries are in charge of programs of the Society. The bylaws state that "papers intended for presentation at any meeting of the Society shall be passed upon in advance by a program committee appointed by or under the authority of the Council; and only such papers shall be presented as shall have been approved by such committee." Formally, the committee with respect to Annual and Summer Meetings is the Program Committee and with respect to regional meetings is the Committee to Select Hour Speakers for the region. In practice, the associate secretary of the region or assigned to a national meeting alone accepts or occasionally rejects ten-minute contributed papers and defers to the organizer of a special session on papers for that session. The associate secretary is free to consult referees and refers the occasional paper about which he is in doubt to the relevant committee.

For many years, the associate secretary in the area where a national meeting fell was assigned to the meeting. It developed that the load was unevenly distributed, to the point that one might be starting work on one national meeting before finishing work on another. A rotation was established among associate secretaries beginning in 1979. The effect is that an associate secretary handles one national meeting in two years, and that not until the second year of a term, so that the associate secretary has gathered experience and is known well in advance.

For many years, through 1960, papers presented by title were part of the program of a meeting in a section called Supplementary Program and the abstracts were passed upon by the cognizant associate secretary. This system was changed so that the papers were no longer associated with a meeting and the associate secretaries handled them in rotation in batches of about fifty.

In 1938 there were three regions, East, West, and Far West, with an associate secretary for each. As noted in the section on the rise of the office of executive director, there was also an associate secretary for financial affairs. This had been done informally but was a formal office from 1944 to 1949.

Geographical regions were not as well-defined then as now. Thus one finds T. R. Hollcroft, whose home base was Wells College, handling consecutive programs in New York and Chicago and A. C. Schaeffer, based at Stanford, with a program in Chicago. The designation West was replaced by Central at the behest and during the term of P. T. Bateman. The Southeast was not a designated region for meetings until 1948 and the first meeting there was the Annual Meeting on 27-29 December 1950 in Gainesville.

Here are the associate secretaries of the second fifty years:

East

T. R. Hollcroft	Jan 1937–Dec 1950
L. W. Cohen	Jan 1951–Dec 1954
R. D. Schafer	Jan 1955–Dec 1958
Everett Pitcher	Jan 1959–Dec 1966
Herbert Federer	Jan 1967–Dec 1968
Leonard Gillman	Jan 1969–Dec 1970
Walter Gottschalk	Jan 1971–Dec 1976
Raymond G. Ayoub	Jan 1977–Dec 1982
W. Wistar Comfort	Jan 1983–

Far West

T. M. Putnam	Jan 1930–Dec 1942
A. D. Michal ¹	Jan 1943–Dec 1944
A. C. Schaeffer	Jan 1945–July 1947
John W. Green	July 1947–Apr 1955
Victor L. Klee, Jr. ²	May 1955–Dec 1959
Richard S. Pierce	Jan 1960–Dec 1970
Kenneth A. Ross	Jan 1971–Dec 1981
Hugo Rossi	Jan 1982–Dec 1987
Lance W. Small	Jan 1988–

West

W. L. Ayres	Jan 1938–Dec 1943
G. B. Price ³	Jan 1944–Dec 1944
R. H. Bruck ⁴	Jan 1945–Sept 1948
J.W.T. Youngs ⁴	Oct 1948–Dec 1963
Seymour Sherman	Jan 1964–Dec 1966
Paul T. Bateman	Jan 1967–Dec 1983
Robert W. Fossum	Jan 1984–Dec 1987
Andy Roy Magid	Jan 1988–

¹Resigned before completing his term.

²Pierce acted for Klee during part of 1958.

³Although he was elected, he was unable to serve because of civilian duties with the military forces in England. J.W.T. Youngs served as acting associate secretary briefly.

⁴Bruck resigned effective with the Summer Meeting of 1948 and Youngs filled out his term.

Southeast

W. M. Whyburn	Jan 1950–Dec 1953
J. H. Roberts	Jan 1954–Dec 1957
G. B. Huff	Jan 1958–Dec 1963
Morton L. Curtis	Jan 1964–Dec 1964
Orville G. Harrold, Jr.	Jan 1965–Dec 1976
Frank T. Birtel	Jan 1977–

Associate secretary for Financial Affairs

M. H. Ingraham	Jan 1938–Dec 1942
W. L. Ayres	Jan 1943–Sept 1946
G. B. Price	Sept 1946–Dec 1949

TREASURERS AND ASSOCIATE TREASURERS

The position of treasurer has changed materially with time. It was once the case that the treasurer kept the books of the Society or closely supervised an employee who did so. With the advent of the executive director, this aspect of supervision passed to the central office. The treasurer remained responsible for fiscal policy though increasing assistance became available with the employment of higher grades of professionals in the fiscal area.

Beginning in 1938, the sequence of treasurers has been as follows:

B. P. Gill	1938–1948
A. E. Meder, Jr.	1949–1964
W. T. Martin	1965–1973
F. P. Peterson	1973–

In June 1965, the Trustees created the position of assistant treasurer, elected by the Trustees among their own membership. The assistant treasurer at the request of the Liaison Committee could act as an alternate for the treasurer. In December 1965 E. G. Begle was elected assistant treasurer for 1967 and also Trustee for the unexpired term of C. B. Morrey, who became president. M. H. Protter was assistant treasurer in 1968–1972. In August 1972 the Business Meeting ratified an amendment to the bylaws creating the post of associate treasurer and enlarging the Board and the Council so that the position carried membership on each. Protter held the elected position through 1976 and Steve Armentrout has held it since 1977.

It was intended that either the treasurer or the associate treasurer be able to handle the duties of the office and that one be available at all times. In

addition there has been by agreement a division of labor in that the associate treasurer has supervised the budget process at *Mathematical Reviews* and the setting by the management of salaries and wages.

THE LIBRARIAN

Until the time of the sale of the library, the librarian was a member of the Council. The position was filled by R. C. Archibald from 1921 to 1941, by Arnold Dresden from 1942 to 1950, and by Jekuthiel Ginsburg in 1951 and 1952. See the section on the change in location of the office of the Society from New York to Providence, where the sale of the library and the consequent elimination of the post of librarian are discussed.

THE PROFESSIONAL DIRECTORY

For many years the list of officers and of committees was published with the bylaws in the *Bulletin*. In 1954 an *Administrative Directory* appeared, showing not only officers and committees but staff and other information. It also carried the officers of the National Research Council Division of Mathematics and the Mathematical Association of America. In 1958 the officers of the Mathematics Conference Organization (later the Conference Board) appeared and in 1960 those of the Association for Symbolic Logic. The year 1960 is the last one in which the bylaws and articles of incorporation appeared in that publication.

The directory was published annually and expanded rapidly to include more organizations and more information. In 1983 the name was changed to *Professional Directory*. By 1987 it listed officers and committees of thirty-seven organizations related to the mathematical sciences. It identified key individuals in seven government agencies. It identified editors and publishers of mathematics journals. It gave mailing addresses and telephone numbers of hundreds of named individuals. It identified about 1800 educational institutions and indexed them. The publication is a privilege of institutional membership and is distributed to all persons listed in it.